

# A1 INSTALLATION DRAWING

IF THIS DOCUMENT IS PRINTED IN HARDCOPY, IT IS FOR INFORMATION USE ONLY AND THEREFORE IS NOT SUBJECT TO UPDATING CONTROLS. ALWAYS REFER TO SOLIDWORKS VIEWER FOR LATEST ISSUE



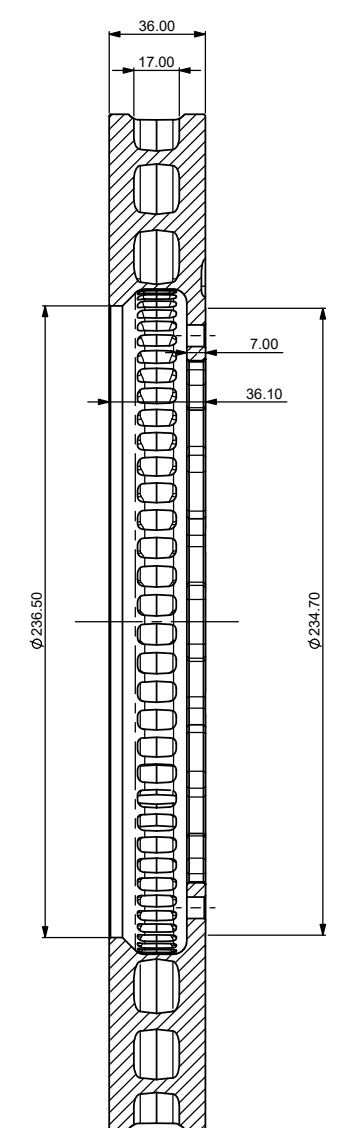
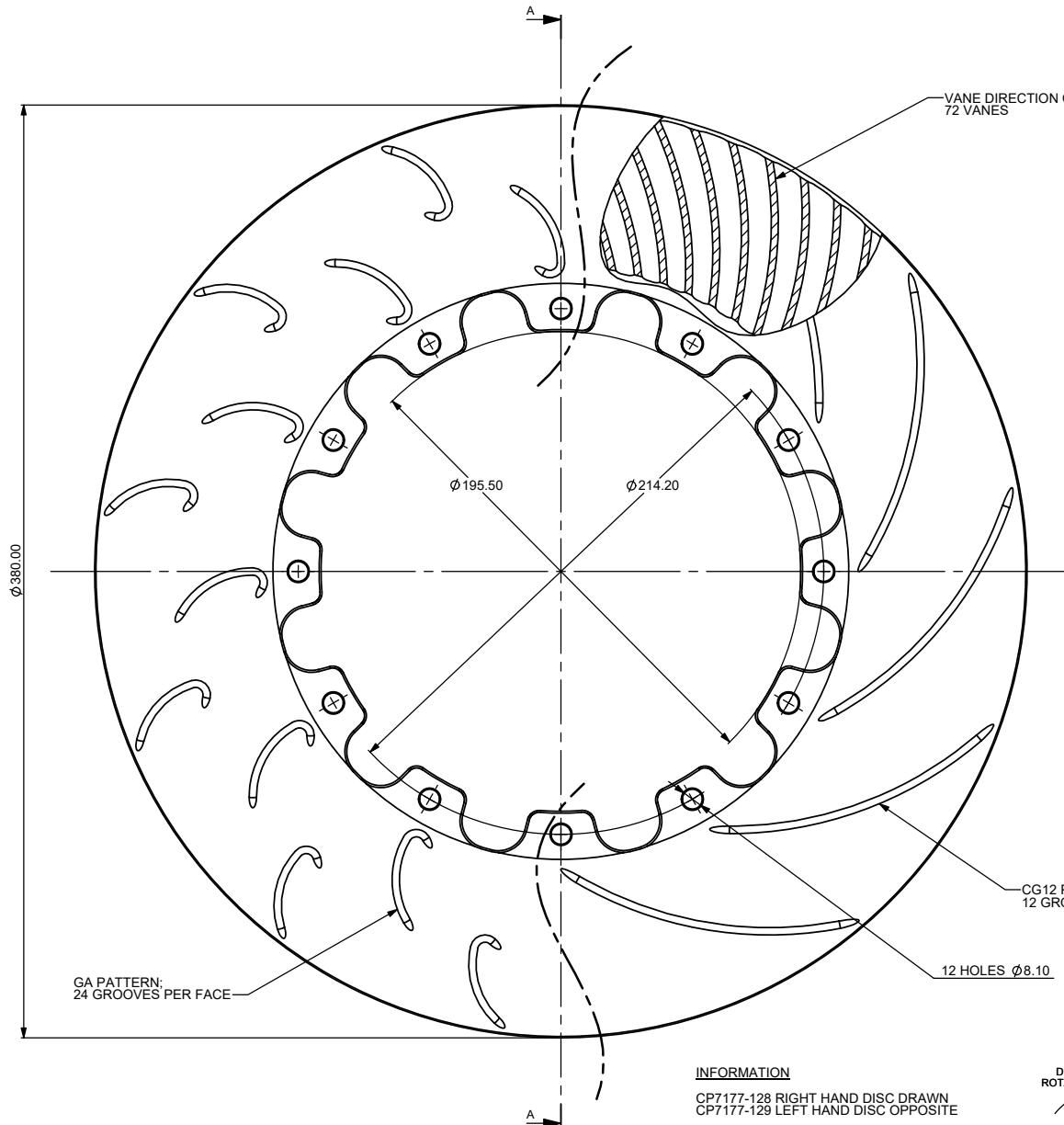
THIS DRAWING IS CONFIDENTIAL AND IS SUPPLIED ON THE EXPRESS CONDITION THAT IT SHALL NOT BE LOANED OR COPIED OR DISCLOSED TO ANY OTHER PERSON OR USED FOR ANY OTHER PURPOSE WITHOUT THE WRITTEN CONSENT OF AP RACING LTD.



AP Racing  
Wheler Road  
Coventry  
CV3 4LB

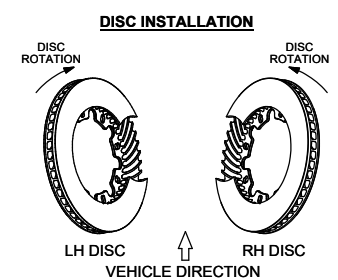
Tel: +44 (0) 24 7663 9595  
Fax: +44 (0) 24 7663 9556  
e-mail: [engineering@apracings.co.uk](mailto:engineering@apracings.co.uk)  
Web site: <http://www.apracings.com>

© AP Racing Ltd. 2015



PART N°	DESCRIPTION
CP7177-128CG12	RH DISC WITH 12 LONG CURVED GROOVES PER FACE
CP7177-129CG12	LH DISC WITH 12 LONG CURVED GROOVES PER FACE
CP7177-128GA	RH DISC WITH 24 'HOOK' GROOVES PER FACE
CP7177-129GA	LH DISC WITH 24 'HOOK' GROOVES PER FACE

**INFORMATION**  
 CP7177-128 RIGHT HAND DISC DRAWN  
 CP7177-129 LEFT HAND DISC OPPOSITE  
 TO SUIT 70MM PAD DEPTH  
 MASS PER DISC - 11.60 Kg  
 FOR USE WITH BOBBIN KIT CP6920-10K12  
 TO ACHIEVE 0.30MM NOMINAL FLOAT  
 FOR DISC MOUNTING TECHNIQUES,  
 BEDDING PROCEDURE AND DISC COOLING  
 RECOMMENDATIONS  
 SEE AP RACING BRAKE DISC CATALOGUE



Issue No.	Alterations		Zone	Initials
	Date & No.	Particulars		
1	25/03/15 R4069	FIRST ISSUE		

SCALE 1:1	SHEET 1 OF 1
DRAWN	Greg Dotman
APPROVED	
DERIVED FROM	
TITLE	
Ø380 x 36 DISC	
CUSTOMER DRAWING	
DRG NO.	CP7177-128-9 CD